



“The aim of the Environmental Education Policy is to foster students’ understanding of the environment as an integrated system and to develop attitudes and skills which are conducive to the achievement of ecological sustainable development”

(NSW DET Environmental Education Policy for Schools 2001).

Sustainability leaders:

- engage in actions that nurture and sustain the economic, environmental and social well-being of the community;
- take responsibility by understanding and tackling complex local issues that impact on the lives of people today and in the future;
- work side by side with others who are seeking to make a difference.

<http://www.sustainabilityleaders.org/leadership>

DET designates
2010
as the Year of Learning
for Sustainability



The HCC Regional Environmental Education Strategy is supported by:

- The Regional Environmental Education Working Group
- (DET) Environmental Education Centres:
 - Wetlands EEC: www.wetlands.eec.education.nsw.gov.au/
 - Rumbalara EEC: www.rumbalara.eec.education.nsw.gov.au/
 - Awabakal EEC: www.awabakal-e.schools.nsw.edu.au/index.htm
- Curriculum Support Directorate Environmental Education Unit:
www.curriculumsupport.education.nsw.gov.au/policies/envired/index.htm
- Asset Management Environment and Sustainability:
<https://detwww.det.nsw.edu.au/assetmanagement/envisust/index.htm>
- Sustainable Schools NSW (DET and DECC):
www.sustainableschools.nsw.edu.au
- Department of Environment and Climate Change (DECC):
www.environment.nsw.gov.au
- Local Government Environmental Education Officers:
 - Lake Macquarie Council: www.lakemac.nsw.gov.au
 - Newcastle Council: www.newcastle.nsw.gov.au
 - Port Stephens Council: www.portstephens.nsw.gov.au
 - Gosford Council: www.gosford.nsw.gov.au
 - Wyong Council: www.wyong.nsw.gov.au
 - Hunter Councils: www.huntercouncils.com.au/environment/
- Hunter-Central Rivers Catchment Management Authority (CMA):
www.hcr.cma.nsw.gov.au
- Community Environment Network (CEN): www.cen.org.au



Hunter Central Coast Region. leadership for sustainability

A strategy for supporting schools 2009–2011

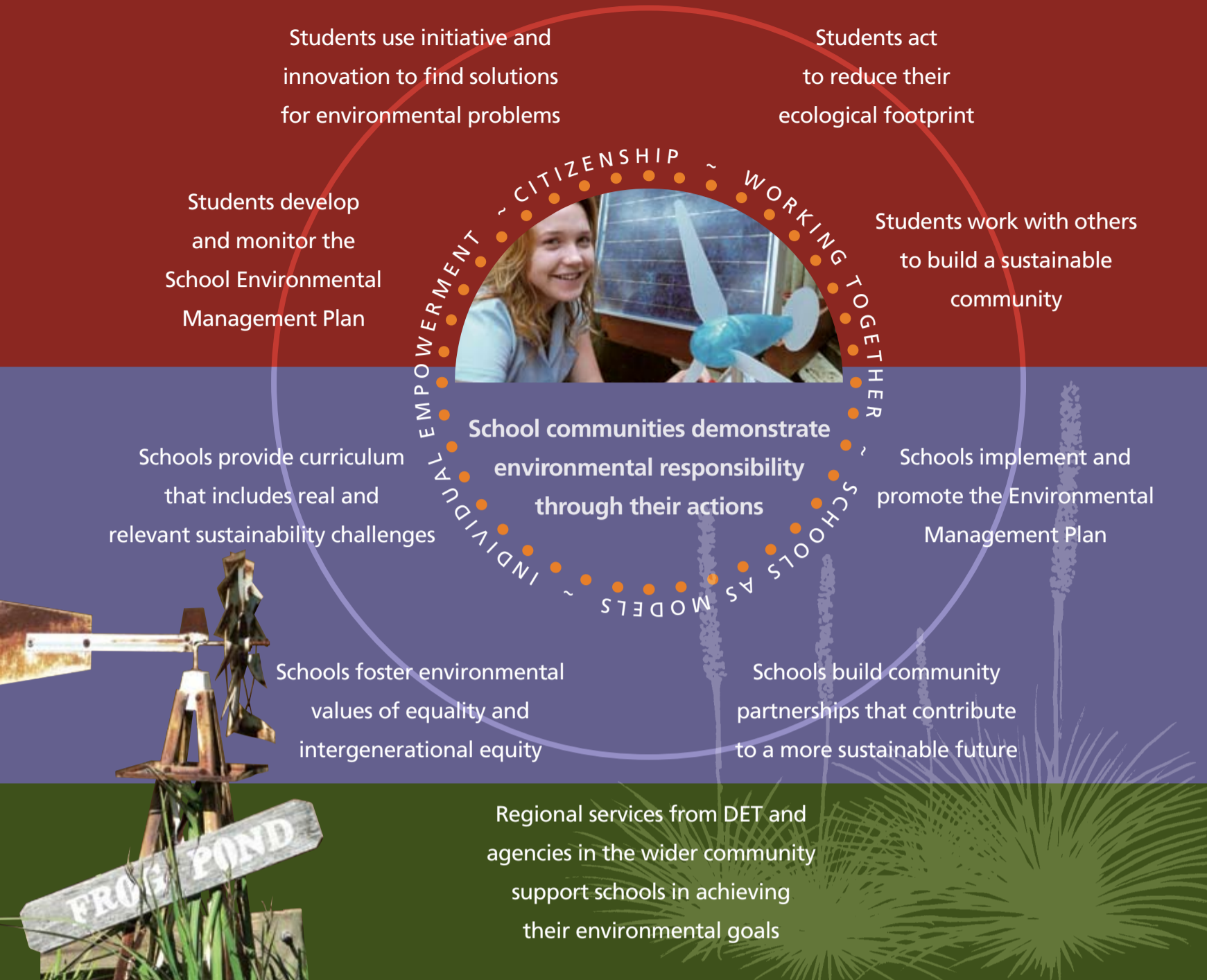
The DET Environmental Education Policy for schools was released in 2001 and many schools have invested significant time and resources to make their schools more sustainable. The reality of escalating climate change has focused the need for responsible actions by all school communities that contribute to significant change towards a more sustainable future.

This strategy outlines some actions for school communities in the Hunter Central Coast Region over the next three years.

*Robyn McKerihan, Regional Director,
Hunter Central Coast*



Sustainable education practice



STUDENTS

LEADERS

STUDENT LEADERSHIP FOR SUSTAINABILITY

Students work with others to reduce the ecological footprint of their school community.

STRATEGIC PLANNING AND MANAGEMENT

Students have the opportunity to develop and monitor the SEMP and report on targets.

Students have the opportunity to develop initiatives and solutions with their peers.

BUILDING CAPACITY

Students build sustainability skills through hands-on experiences.

Students participate in sustainability forums to build leadership skills.

Students use problem solving skills and engage in research to address issues of sustainability.

COMMUNICATION AND INFORMATION TECHNOLOGY

Students apply new and emerging technologies and e-learning tools to share their sustainability initiatives.

PARTNERSHIPS IN THE COMMUNITY

Involvement with community programs and service learning initiatives for the environment allow students to make real contributions to a sustainable community.

SCHOOLS

SCHOOL LEADERSHIP FOR SUSTAINABILITY

Schools promote environmental values and provide curriculum and service learning opportunities to enable students to contribute to a sustainable community.

Schools implement and promote the School Environmental Management Plan.

The SEMP incorporates school targets for water, energy, waste and biodiversity.

Links to the school curriculum underpin the development and delivery of the SEMP.

Schools access resources that support the integration of sustainable practice in the curriculum.

Schools develop locally relevant units of work using the Quality Teaching framework.

Schools facilitate environmental initiatives and events.

School sustainability activities are promoted to build awareness and engage the school community.

Connected classrooms are used for teacher training and sharing sustainable schools initiatives.

Schools engage their local community in partnerships that support sustainability.

The learning community model used to achieve sustainable school objectives.

REGION

REGIONAL LEADERSHIP FOR SUSTAINABILITY

Regional services from DET and agencies in the wider community provide services, programs, tools and directions to support schools in achieving their environmental goals.

The regional strategy provides long term vision and objectives.

Coordination with other regional environmental stakeholders supports common objectives.

The region clarifies DET targets for water, energy and waste.

The DET Assets Management Team provides advice on efficient usage, maintenance and procurement.

Environmental Education Centres provide fieldwork programs that allow students and teachers to investigate natural environments.

Case studies facilitate the sharing of environmental achievements between schools.

Professional Learning for school communities delivered through network meetings, training workshops and ICT.

School communication is supported through regional websites, regular newsletters and networking tools.

ICT facilities used to support leadership and training initiatives.

SEMP building tools are available on-line.

Environmental Education regional networking meetings provides partnership opportunities.

Identify networks to support the integration of Aboriginal perspective.

A regional Environmental Education Working Group representing schools and other stakeholders monitors the implementation of the Regional Environmental Education Strategy.